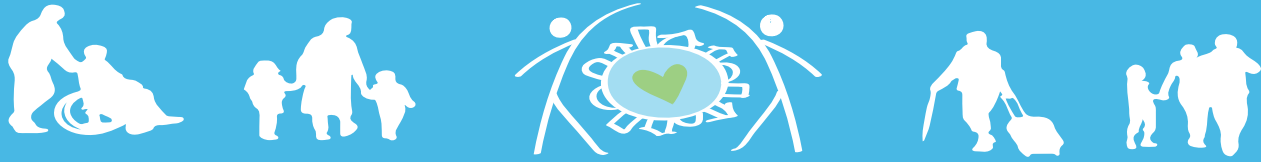


Mobilize for Affordable Housing in Your Community



May 17th, 7:00PM - 9:00PM, Adath Jeshurun Congregation

The Metro Housing Crisis

The Twin Cities is in the midst of an affordable housing crisis. Rent is skyrocketing while median incomes have fallen. On average, Minnesota families must earn \$17.20/hr & work 40hr/week to afford a two bedroom.

Hennepin County Trends

Affordable housing has become incredibly sparse in the suburbs and throughout Hennepin County. Here are some examples of the growing disappearance of affordable units. This is only a snapshot of the policies we hope to change in the Hennepin county area.

Minneapolis: A renter would need to make nearly \$20 per hour to afford the average rental unit in Minneapolis... A renter making minimum wage would have to work 110 hours a week.

St. Louis Park: In 2016 Meadowbrook Manor apartments were sold and upgraded. Rents raised up to \$125 a month, and hundreds of low income families were displaced.

Plymouth: Currently 200 affordable housing units have been built in the last decade, not yet enough to meet the needs the 50,000 workers in the city, many low income.

Join us on May 17th to learn from three powerful speakers and build local affordable housing strategies with your community and neighbors

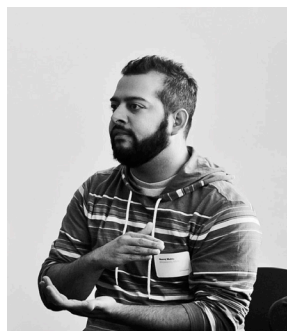
Zeynab Egale

Tenants Advocate at HOME Line



Neeraj Mehta

Center for Urban and Regional Affairs
at the University of Minnesota,
Humphrey School of Public Affairs



Anne Mavity

St. Louis Park City Council Member



Register online at tinyurl.com/hennepinaffordablehousing

For more information and any questions please contact Lyndel Owens

Lyndel: lyndel@jewishcommunityaction.org Phone: 651-632-2184.

