



2017 ANNUAL REPORT

For Fiscal Year July 2016-June 2017

Mission

The St. Louis Park Emergency Program's mission is to identify, address and respond to the critical and emergency needs of residents in St. Louis Park.

Geography and populations served

STEP provides direct assistance and support services to residents of St. Louis Park, targeting households with low incomes and those faced with a financial crisis.

Program details

STEP served clients in need of assistance with our food, clothing, transportation, emergency financial assistance, seasonal programs, and support and guidance from professional social workers. In the 2016-17 fiscal year, STEP served 3,684 individuals—8% of the St. Louis Park population.

Social Work Services:

Residents have access to crisis counseling, general support and guidance, advocacy, and referral to medical, mental health, child care, job readiness, and other services from professional social workers. In this fiscal year, STEP social workers had 11,964 household client contacts. These services are woven throughout STEP's other programs.



Clothes Closet

STEP provides a variety of everyday, work, and seasonal clothing to residents at no cost. In this fiscal year, STEP provided 8,030 bags of clothing, including 893 winter coats during our winter wear distribution.

Program expense: \$309,260



Transportation

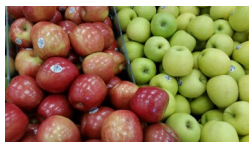
STEP provides residents in need of transportation assistance to access healthcare, social service, and food shelf visits with the volunteer drivers. In this fiscal year, drivers logged 7,105 miles over 1,450 rides. STEP also distributed \$1,980 in bus and gas certificates to 179 individuals.

Program expense: \$47,184

Food Assistance

STEP responds to the need for nutritional support and strives for a hunger free community. In this fiscal year, STEP distributed 635,866 pounds of food over the course of 6,954 household food shelf visits. An average of 29.5 pounds of food was distributed to each individual in a household per visit. A total of 3,449 individuals were served by the food shelf during the year.

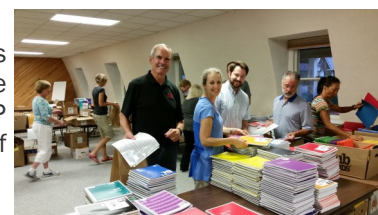
Program expense: \$1,501,956



Back to School

STEP provides school supplies and backpacks to eligible students. In this fiscal year, STEP provided the full school list of supplies to 461 students.

Program expense: \$33,586



Holiday Program

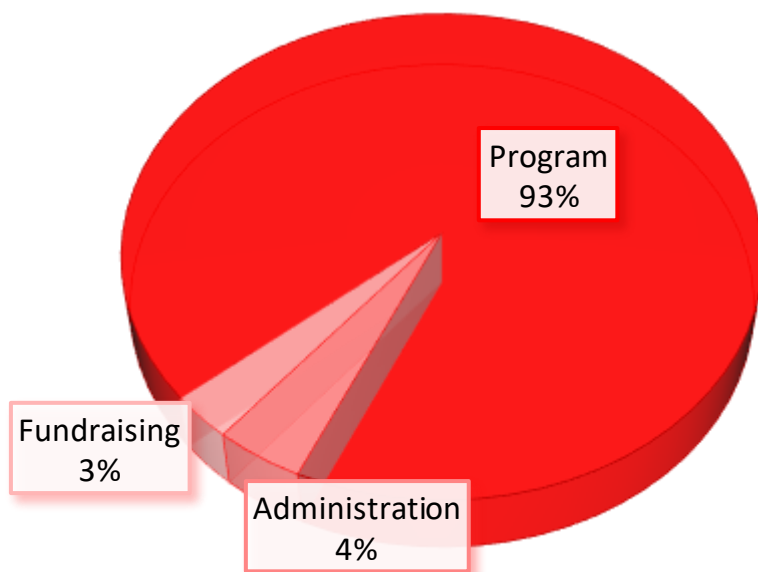
STEP provides toys or gift cards for eligible families with children to enable them to fully participate in the holiday season. In this fiscal year, STEP distributed toys or gift cards for 596 children.

Program expense: \$56,798

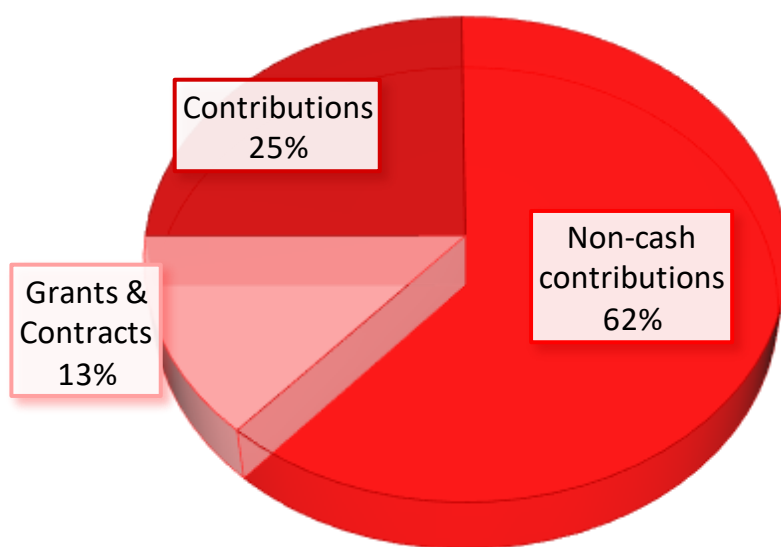


FISCAL YEAR 2016-17 FINANCIAL SUMMARY

FUNCTIONAL EXPENSES



REVENUE CATEGORIES



Significant financial support provided by:

Anderson Companies, Anglican Church of St. Dunstan, Bakken Family WRC Foundation, Beverly Foundation, Canadian Pacific, Caroline's Kids Foundation, Citizens Independent Bank, City of St. Louis Park, Clara Ruth Kaner Children's Fund, Craftsman's Choice, DaVita Total Renal Care, Discover St. Louis Park, Evangelical Lutheran Church in America, Fast for Feast, FEMA, George R Wolff VFW Post 425, Granite City Food & Brewery, Greater Minneapolis Council of Churches, Holy Family Church, Hunger Solutions Minnesota, Jonathan J. Tychman Revocable Trust, Luther Family Foundation, Open Your Heart to the Hungry and Homeless, Opus Foundation, Otto Bremer Trust, Packaging Solutions, Park Nicollet Foundation, Parkshore Senior Campus, Peace Presbyterian Church, Prince of Peace Lutheran Church, RBC Foundation, Roger and Nancy McCabe Foundation, Spirit of Christ Lutheran Church, St. George's Episcopal Church, St. Louis Park Community Foundation, St. Louis Park Family Service Collaborative, St. Louis Park Rotary Foundation, Target Foundation, The Excelsior Group, The Webb Group, Temple Israel, Westwood Lutheran Church, Wooddale Lutheran Church

INCOME STATEMENT

July 1, 2016 - June 30, 2017

REVENUE	\$2,266,153
EXPENSES	\$2,169,879
NET CHANGE	\$96,274



BALANCE SHEET

As of June 30, 2017

ASSETS

CURRENT ASSETS	\$500,047
PROPERTY & EQUIPMENT	\$758,262
OTHER ASSETS	\$331,563
TOTAL ASSETS	\$1,589,872

LIABILITIES

TOTAL NET ASSETS	\$1,534,058
-------------------------	--------------------

BOARD OF DIRECTORS & KEY STAFF AS OF JUNE 30, 2017

Board of Directors

Sharon Abelson
Jason Alvey
Mary Beth Gaines, Secretary
Erin Gonzalez-Bardzinski, Exec. Cmte. At-Large
Susan Gross
Steve Hallfin
Dave Homans
Jeff Jacobs
Sadie Miller
Cindy Motzko, Vice Chair
Jennifer Ortale, Chair
Dick Parsons, Past Chair
Curt Rahman, Treasurer
Joy Sandler
Sue Santa
Camille Schroeder, Exec. Cmte. At-Large
Lee Snitzer
Joe Tatalovich
Rebecca Viot

Honorary Board of Directors

Judith Bennett,
Arnold Bloomquist
Marion Brummer
Margo Chesley
Elissa Heilicher
Raleigh Kent
Roger McCabe
Frank Radermacher
John Steffenhagen
Len Zeff

Key staff

Derek Burrows Reise, Executive Director
Julie Lapointe, Program Manager
Adrienne Rochat, Business Manager

COUNTLESS VOLUNTEERS & COMMUNITY SUPPORTERS

